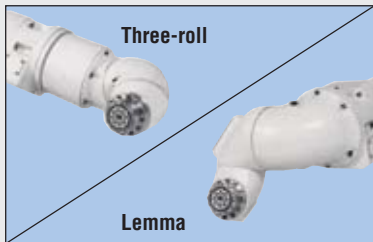
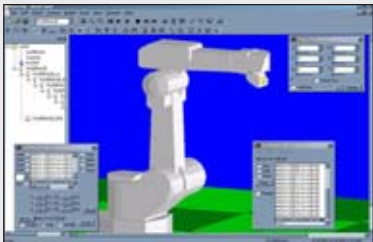




PAINTING OF INTERIOR SURFACE



WRIST OPTIONS



MOTOSIM® OFF-LINE PROGRAMMING

FEATURES & OPTIONS

- 2,035 mm reach
- ± 0.5 mm (± 0.02 ") repeatability
- Floor-, wall-, ceiling- mount options
- Three-roll or Lemma style wrist available
- FM rating: Class 1, Div. 1 (explosion-proof)
- Advanced application-specific paint software
- MotoSim® simulation software (optional)
- MotoMax® III warranty (standard)



Motoman's versatile PX2050 robot provides superior performance in coating applications.

• COATING • DISPENSING •

PX2050

Available with three-roll or Lemma wrist

Versatile Coating Robot

The high-speed PX2050 robot is available with either a three-roll or Lemma-style wrist, providing versatility and superior performance in standard industrial and automotive coating applications.

The three-roll wrist design is ideal for painting contoured parts such as car bodies and interior/exterior surfaces. The Lemma wrist is well-suited for painting horizontal and vertical planes.

The PX2050 robot is Factory Mutual (FM) approved for Class 1, Div. 1 use in hazardous environments. It features a 10 kg (22.1-lb) payload capacity, a 2,035 mm (80.1") reach, and a ± 0.5 mm (± 0.02 ") repeatability. The compact design of the highly flexible, six-axis PX2050 robot makes it easy to mount on the floor, wall or ceiling.

Optional devices such as 24-color CCU, FGP, washing unit valve and master valve can be mounted on the upper arm resulting in reduced tact time and wasted paint.

Advanced XRC 2001-FM Controller

The advanced XRC 2001-FM controller features fast processing, easy-to-use INFORM II programming, and includes application-specific software for coating.

Two types of programming pendants are available — the standard model for use in non-explosive painting applications and as an option, an intrinsically-safe version for use in hazardous conditions.

The XRC 2001-FM coordinates operation of robot and painting devices, including the gun. It supports gun control instructions such as spray start/stop and painting conditions. All painting position parameters can be filed and saved.

The XRC 2001-FM supports standard networks (such as DeviceNet, ControlNet, Profibus-DP, and Interbus-S), enabling connection to paint machine controllers and line controllers.

